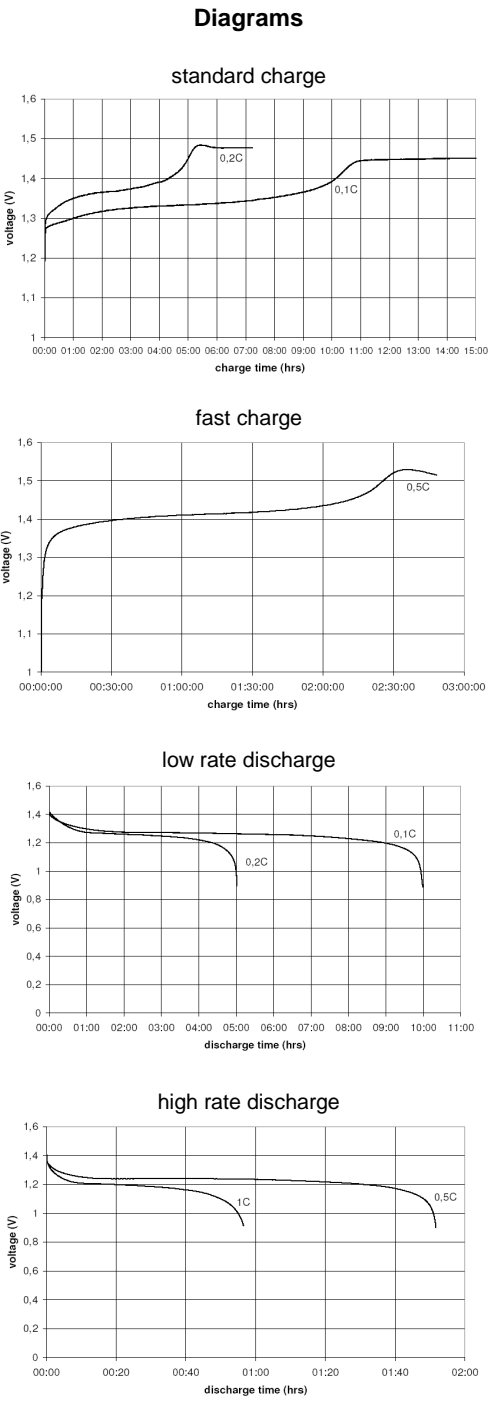
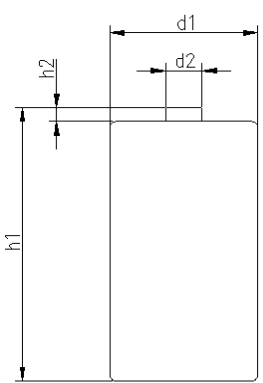


		Conditions	
<b>cell type:</b>	NiMH		
<b>cell size:</b>	D		
<b>nominal voltage:</b>	1.2 V	at standard charge (0.1C / 20°C)	
<b>max. charge voltage:</b>	1.5 V		
<b>capacity</b>			
nominal:	9000 mAh	discharge at 0.2C	
minimum:	8500 mAh	discharge at 0.2C	
	7650 mAh	discharge at 1C	
		1.0V end discharge voltage	
		ta: 20°C	
<b>max. continuous discharge current:</b>	24 A	ta: 0...45°C	
<b>charge</b>	current	time	
standard charge:	900 mA	14...16hrs	
quick charge:	2500 mA	4hrs	
fast charge:	4500 mA	2.2hrs	
recommended charge termination control parameters:	0...5 mV 0.8...1 °C 45...50 °C	- delta V temperature rise per minute TCO (temperature cut off)	
trickle charge current:	85...285 mA	(recommended)	
continuous overcharge: (less than 28 days)	≤ 850 mA	no conspicuous deformation no leakage	
<b>internal resistance:</b> (impedance)	≤ 6 mΩ	at 1KHz battery fully charged	
<b>life expectancy:</b>	≥ 500 cycles	acc. IEC standard	
<b>self discharge</b>			
charge retention: (ta: 20°C)	≥ 80 % ≥ 75 %	after 6 months storage after 12 months storage	
<b>initial capacity:</b>	≥ 6000 mAh	within 30 days after delivery discharge at 0.2C	
<b>ambient temperature range:</b>	0...45 °C 10...40 °C - 20...55 °C - 20...50 °C - 20...40 °C - 20...30 °C	standard charge fast charge discharge storage (≤3months) storage (≤6months) storage (≤24months)	



<b>QCT1:</b>	10/8300/25
<b>QCT2:</b>	12/8000/30
<b>mechanical specifications</b>	
cell dimensions	
diameter d1:	33.0 - 0.8 mm
diameter d2:	approx. 12.5 mm
height h1:	61.0 - 1.5 mm
height h2:	0.0 - 0.5 mm
weight:	160 ± 5 g



	<b>ANSMANN Specifications for model:</b>	<b>D850mAh FLAT TOP</b>
	data sheet no. / part no.	2310-3002
	version no.	0
	author / date	TG/ 09.11.2012