

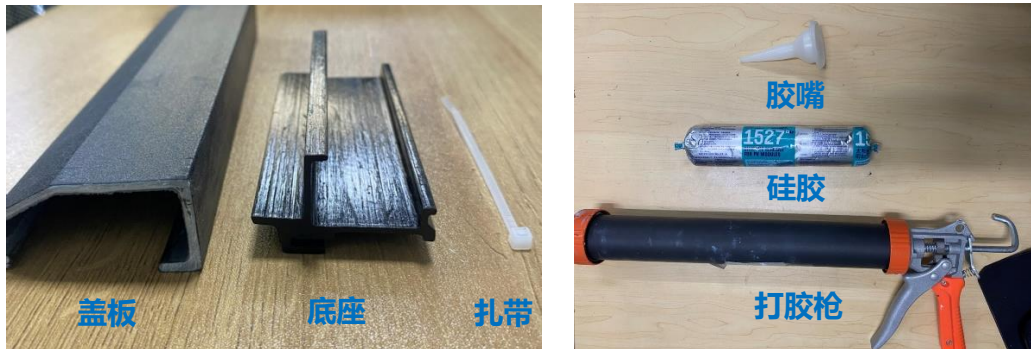
Cable Management DuctBox 2.0
Installation Manual

Contents

1. Installation and Configuration 安装配置	3
2. Base Plate Gluing 底座打胶.....	3
3. Install the Base Plate 底座安装.....	4
4. Securing Cables 线缆固定	5
5. Fixing the Cover Plate 盖板固定	6
6. Removing the Cover plate 盖板拆卸	7

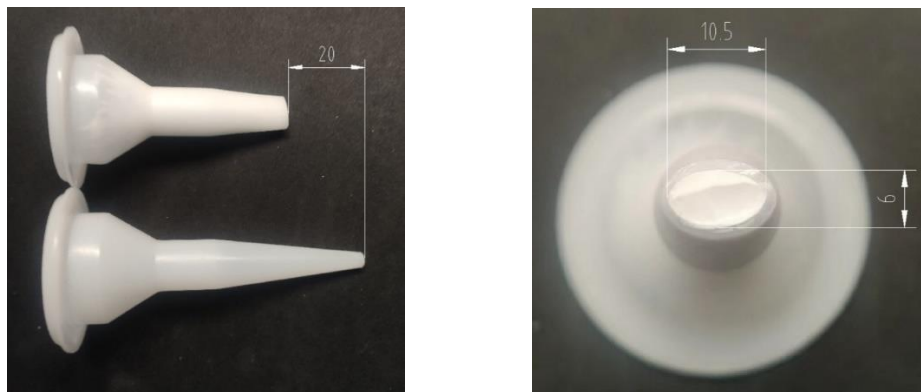
1. Installation and Configuration 安装配置

Each panel will utilize one 2054mm duct box cover and four 100mm bases. The installation will require appropriate structural silicone, glue gun, glue gun nozzle and small cable ties. 每块组件搭配 1 根 2054mm 长的盖板和 4 根 100mm 长的底座进行安装，需要用到的安装工具/材料：硅胶/结构胶、打胶枪、胶嘴、2-3mm 宽的尼龙扎带。



2. Base Plate Gluing 底座打胶

The nozzle shall be cut to allow for a faster rate of glue delivery. The first cut to the nozzle should take approximately 20mm off the end of the nozzle. A second angled cut should make the end of the nozzle approximately 10.5mm by 6mm. 对打胶枪胶嘴进行剪切预处理，标准胶嘴切口内尺寸为 10.5mm×6mm。制作时需在原胶嘴基础上切除约 20mm 长度，再压扁至所需尺寸，如下图所示：

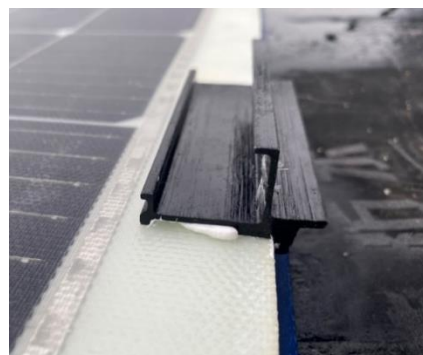
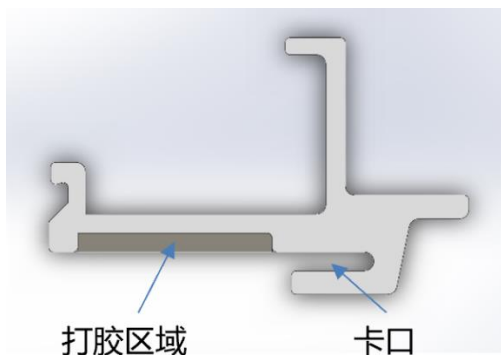


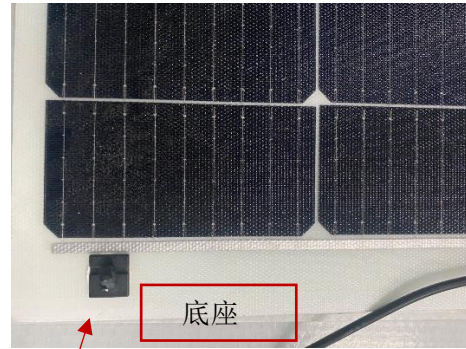
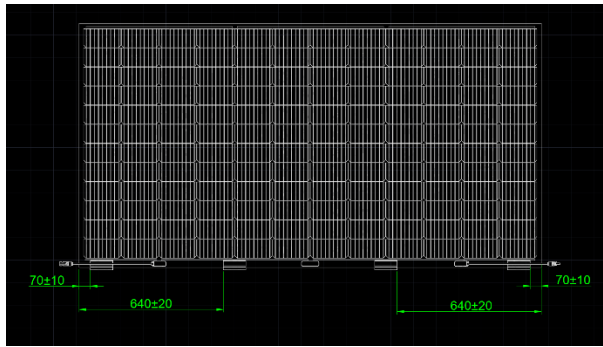
Add a line of glue in the allocated area on the base plate. The required glue bead size is 10mm wide and 5mm tall along the entire base plate. 在底座打胶区域中间打一道胶即可满足胶量需求，推荐胶宽 10mm，胶厚 5mm。



3. Install the Base Plate 底座安装

The centre of the clamps shall be placed $70\pm 10\text{mm}$ and $640\pm 20\text{mm}$ from the end of the panel as per the layout below. Place the base plate on the panel and slide the edge of the panel into the clip. Push the panel to the edge of the clip to ensure they all line up. Press down on the surface on the base in the gluing area to ensure the glue distributes evenly and engages with the panel. Please take care to ensure the glue does not drip onto the front sheet where the cells are encapsulated as this may affect the panel operation. 通过底座下端卡口，将底座卡接到组件边缘处，推动底座向组件内侧移动，底座下端卡口与组件完全配合时，停止推动(底座安装位置详见下图，组件两端底座避开线缆卡扣进行安装，中间的底座在相邻的两个线盒中间位置安装)，按压打胶区域的底座表面，使胶均布，完成底座安装。





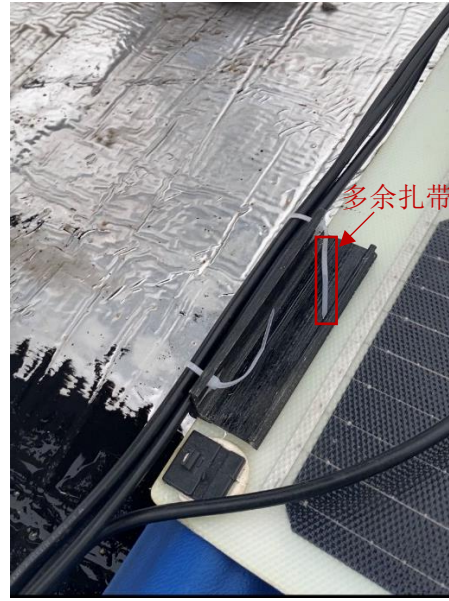
线缆卡扣

4. Securing Cables 线缆固定

If necessary, use the cable ties to secure the cables to the base. Each base has four holes for cable tie usage. 使用尼龙扎带将线缆固定在底座上，每个底座配备 4 个孔位用于 2 根扎带固定，固定方式详见下图。

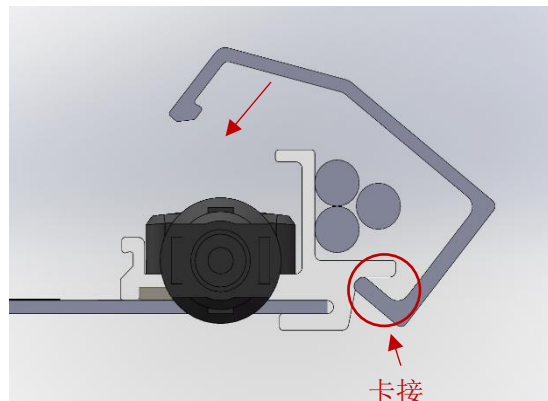
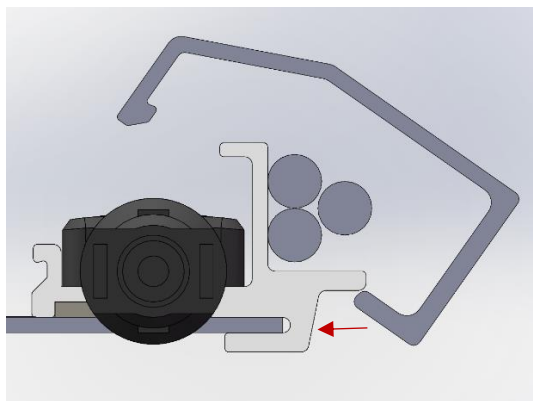
Additional notes: 注意事项:

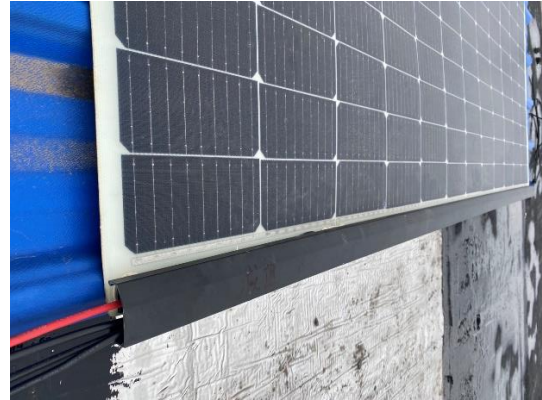
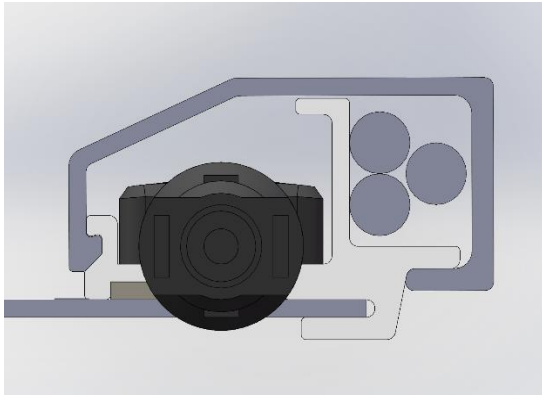
- a) It is recommended to attach the cables on the outer side of the base plate. Cable ties should be threaded through from the cell side of the base plate for ease of adjustment. 扎带需从底座打胶侧穿入圆孔，若与线缆同侧穿入圆孔，扎带调整困难，无法扎紧；
- b) Before securing the cable ties, straighten the cable to minimize sag and to ensure the cables will not touch the roof or hinder the installation of the cover plate. 扎带扎紧前，拉直线缆，线缆无下垂现象，保证线缆均在组件表面上方；
- c) After the cable ties are tightened, it is recommended to cut off the excess cable ties to prevent interference between the base plate and the cover plate. 扎带扎紧后，建议剪去多余扎带，防止干涉底座与盖板卡扣配合，影响安装；



5. Fixing the Cover Plate 盖板固定

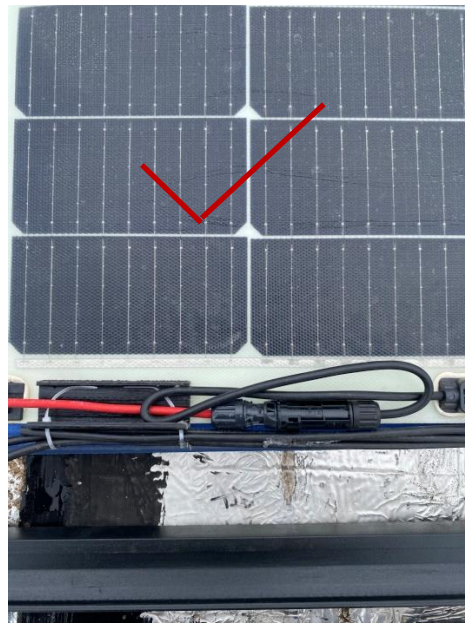
Wait until the silicone applied to the base plate is cured enough to allow for installation. Adjust the MC4 position and line up the back edge of the cover plate with the lip of the base plate. Rotate the cover plate and press down to interlock the cover plate with the base plate. Do not use excessive force as this may damage the cells. If additional force is required, pull the front edge of the cover plate out to reduce the force requirement. The installation diagram can be seen below. 调整 MC4 位置，侧方置入盖板，旋转下压盖板，与底座形成互扣，完成安装，安装示意图如下所示：





Additional notes: 注意事项:

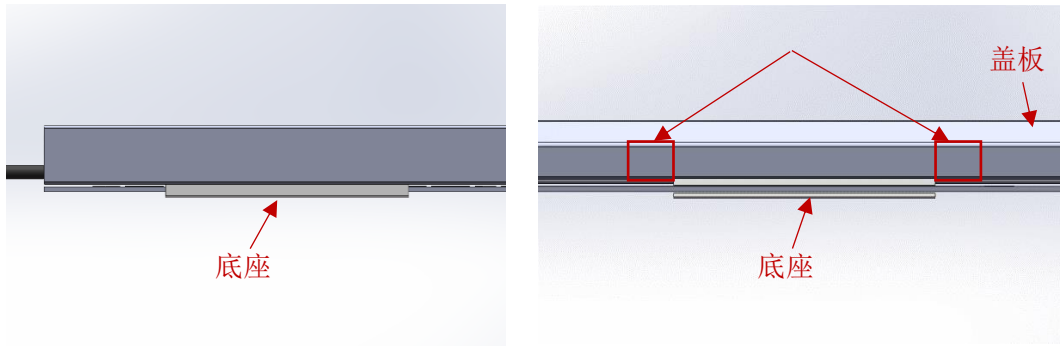
- a) When adjusting the MC4 position, do not overlap the cable with the MC4 connector. This may affect the cover plate installation. MC4 调整位置时，避免线缆与 MC4 头重叠，从而影响盖板安装；



- b) Before pressing down the cover plate, ensure that the bottom of the cover plate is lined up with the base plate. Proper installation should result in the cover plate “clicking” into place. 下压盖板前，确保盖板底部与底座形成卡接，盖板按压过程中，听到咔的一声，代表盖板与底座完成互扣。

6. Removing the Cover plate 盖板拆卸

通过底座下端凸起的部分结构能够快速找到底座的位置，手掰或者借助工具使底座两旁的盖板卡扣面发生形变，使盖板和底座脱离，拆卸 4 个卡扣连接，完成单块组件盖板拆卸。



辅助拆卸工具可以试试以下两种工具：

