



## BMS for 9.6V LiFePO4 Battery Pack

### SPECIFICATIONS

Protection IC BQ40Z50-R1. Please consult with an MI engineer for programming options.

**No. Test Item** \*Test at normal temperature 25±2°C and relative humidity ≤90%.

**Criterion**

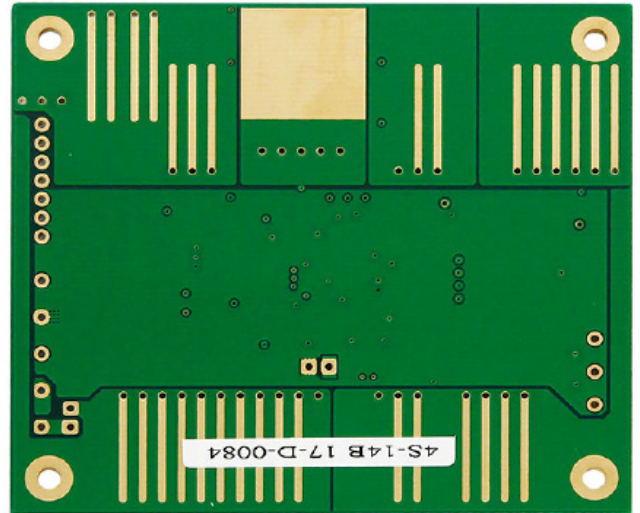
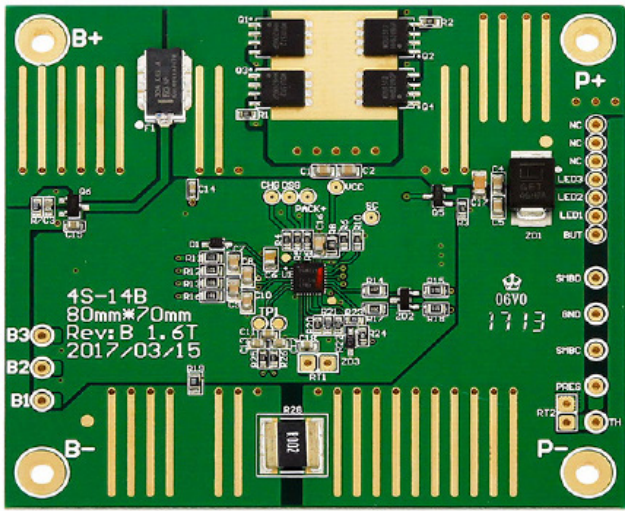
1	<b>Voltage</b>	Charging voltage		DC: 10.8V CC/CV	
2	<b>Current</b>	Current Consumption (Software)		<336µA	
		Current Consumption (Sleep Mode)		<75µA	
		Maximal Continuous Charging Current		<6A	
		Maximal Continuous Discharging Current		<18A	
3	<b>Over Current Protection</b>	OCC1 Threshold	6000mA	OCD1 Threshold	18000mA
		OCC1 Delay	2s	OCD1 Delay	2s
		OCC2 Threshold	8000mA	OCD2 Threshold	20000mA
		OCC2 Delay	2s	OCD2 Delay	2s
4	<b>Over Charge Protection</b>	COV Threshold Low Temp	12.3V±0.15V	COV Recovery Low Temp	12.0V±0.15V
		COV Threshold Std Temp	12.3V±0.15V	COV Recovery Std Temp	12.0V±0.15V
		COV Threshold High Temp	12.3V±0.15V	COV Recovery High Temp	12.0V±0.15V
		COV Threshold Rec Temp	12.3V±0.15V	COV Recovery Rec Temp	12.0V±0.15V
		COV Delay	2s		
5	<b>Over Discharge Protection</b>	CUV Threshold	6.0V±0.15V	CUVC Threshold	6.0V±0.15V
		CUV Delay	2s	CUVC Delay	2s
		CUV Recovery	6.6V±0.15V	CUVC Recovery	6.6V±0.15V
6	<b>Over Temperature Protection</b>	OTC Threshold	+70°C±3°C	UTC Threshold	0°C±3°C
		OTC Delay	2s	UTC Delay	2s
		OTC Recovery	+55°C±3°C	UTC Recovery	5°C±3°C
		OTD Threshold	+80°C±3°C	UTD Threshold	-20°C±3°C
		OTD Delay	2s	UTD Delay	2s
		OTD Recovery	+55°C±3°C	UTD Recovery	5°C±3°C
		OTF Threshold	+85°C±3°C		
		OTF Delay	2s		
7	<b>Secondary Protection</b>	Cell		4.75V±0.1V	
		Detection Condition		P+, P- Short Circuit	
8	<b>Short Protection</b>	Detection Delay Time		200-500µs	
		Release Condition		Cut Load	
		Protection Circuitry		≤10mΩ	
10	<b>Temperature</b>	Operating Temperature Range		-30°C~+85°C	
		Storage Temperature Range		-40°C~+125°C	
11	<b>Dimensions</b>	L 80.0mm x W 70.0mm x T 4.2mm			





### BMS for 9.6V LiFePO4 Battery Pack

#### IMAGE



#### CONNECTION DIAGRAM

